

S23 Disassembly and Assembly procedure

SUMMARY

INTRODUCTION..... 3

1 TOOLING DEFINITION 4

2 DISASSEMBLING PROCEDURE..... 5

2.1 REMOVE THE BATTERY COVER AND BATTERY 5

2.2 REMOVE THE SCREWS 5

2.3 REMOVE THE LOWER HOUSING ASSEMBLY..... 6

2.4 REMOVE THE BACK CAMERA AND FRONT CAMERA 6

2.5 REMOVE THE PCBA FROM THE UPPER HOUSING..... 7

2.6 REMOVE THE COMPONENTS FROM THE UPPER HOUSING..... 8

3 ASSEMBLING PROCEDURE 9

3.1 ASSEMBLE THE UPPER HOUSING ASSEMBLY 9

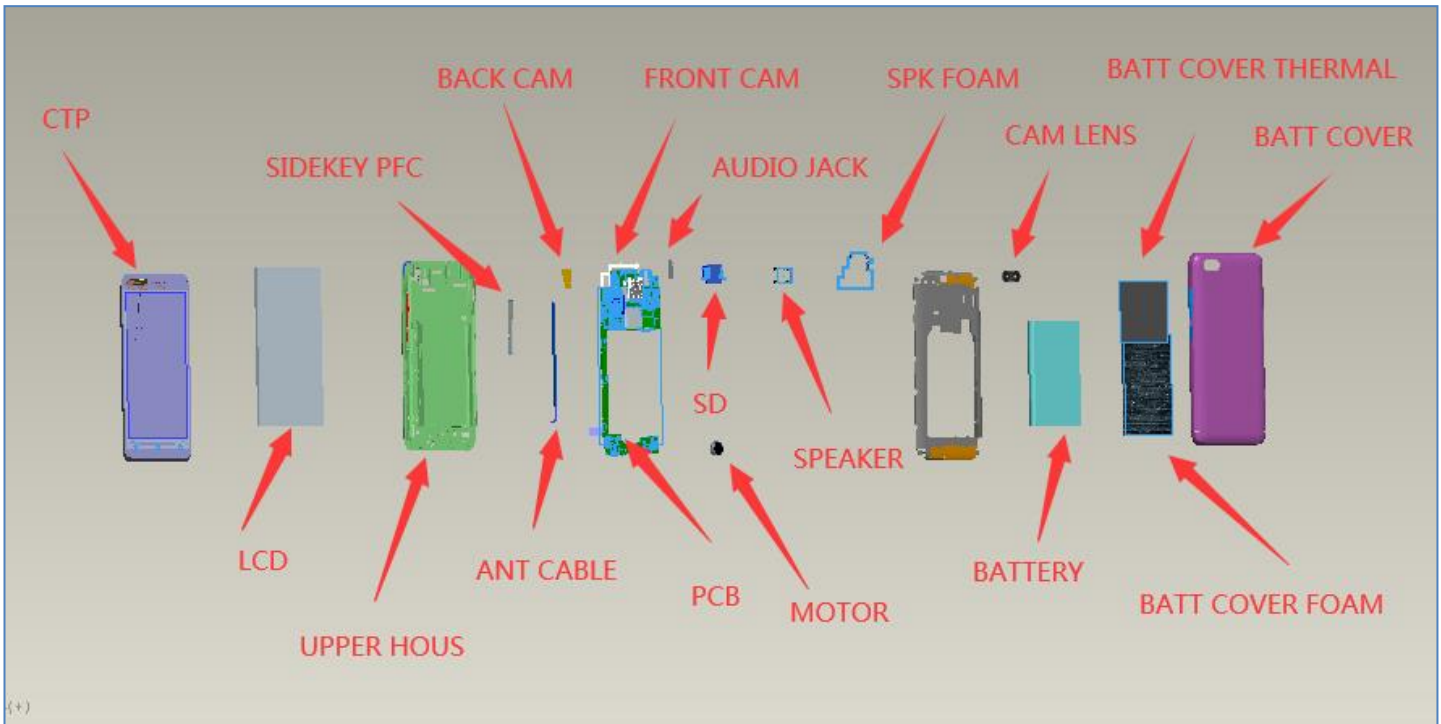
3.2 ASSEMBLE THE COMPONENTS ON THE PCBA 10

3.3 ASSEMBLE THE LOWER HOUSING 11

3.4 ASSEMBLE THE BATTERY COVER 12

Introduction

The purpose of this document is to explain how to disassemble H5032 product. Detailed steps are mentioned with warnings as below.



S23 Disassembly and Assembly procedure

1 Tooling definition

Forceps



Soldering iron



Electric screwdriver



Rigid thin plastic card



2 Disassembling procedure

2.1 Remove the battery cover and battery

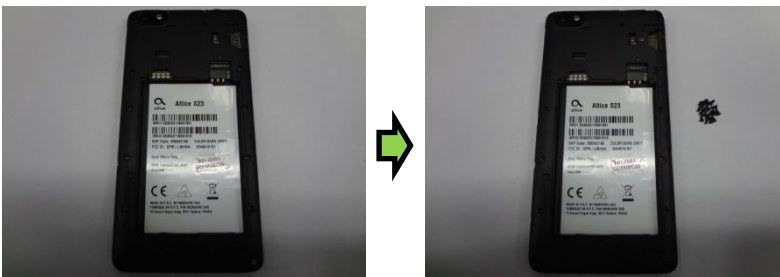
SAP code:battery cover = 286562247



Remove the battery cover and battery by opening the special slot.

2.2 Remove the screws

SAP code:screws = 286453422



Remove the screws (qty=17PCS) by using the screwdriver carefully.

2.3 Remove the lower housing assembly

SAP code: ASS lower housing = 286593346



Insert a rigid thin plastic card between the lower and upper housing assembly. Start from the bottom of the product and along the sides to remove the lower housing assembly carefully.

2.4 Remove the back camera and front camera

SAP code: Bac camera = 178173272



Remove the back camera by opening the connector.

2.5 Remove the PCBA from the upper housing.

SAP code: REF PCBA = 286565454,, motor = 178137151, front camera=178162196, headest rub=286548495,

Usb rubber=286445264, RF Cable=178173850



1. Open the **LCD FPC** connector and **TP** connector. **FPC SIDEKEY** connector. **RF Cable** connector by using the forceps.
2. Remove the motor by using the soldering iron
3. Remove the PCBA from the upper housing assembly by using the forceps.

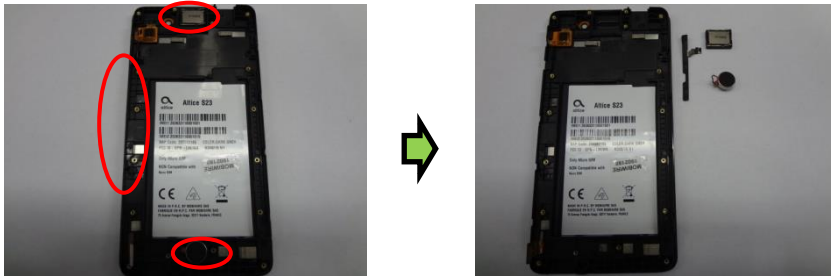


Remove the **front camera** and **headest rubber**. **Usb rubber**. **RF Cable** from the PCBA by using the forceps.

S23 Disassembly and Assembly procedure

2.6 Remove the components from the upper housing

SAP code: Ass uppHousing = 286571556, FPC SIDEKEY = 286549421, Speaker = 178161363



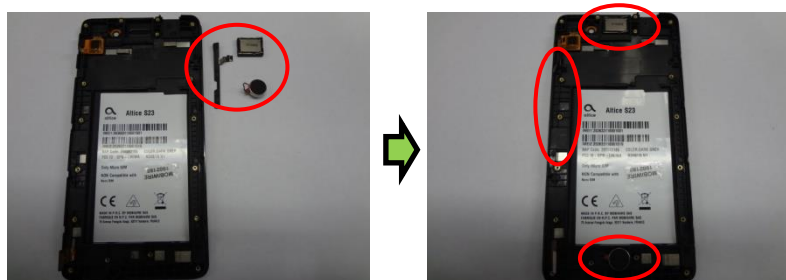
Remove the **FPC SIDEKEY** and **Speaker** ,**Motor** from the upper housing assembly by using the forceps.

3 Assembling procedure

3.1 Assemble the upper housing assembly

SAP code: Ass uppHousing = 286571556, FPC SIDEKEY = 286549421,

Speaker = 178161363



Use the forceps to put the Speaker, FPC SIDEKEY, Motor in the special slot of the upper housing assembly.

3.2 Assemble the components on the PCBA

SAP code: REF PCBA = 286565454,, motor = 178137151, front camera=178162196, headest rub=286548495,

Usb rubber=286445264, RF Cable=178173850 ,Bac camera = 178173272



Assemble **front camera** and **headest rubber**. **Usb rubber**. **RF Cable** by using forceps .



1. Assemble the PCBA in the upper housing.
2. Assemble motor by using soldering iron.
3. Use forceps and insert the **LCD FPC**. **SIDEKEY FPC**. **TP FPC**. **RF Cable** into the dedicated connector on the PCBA.

S23 Disassembly and Assembly procedure



Assemble the back camera by using forceps.

3.3 Assemble the lower housing

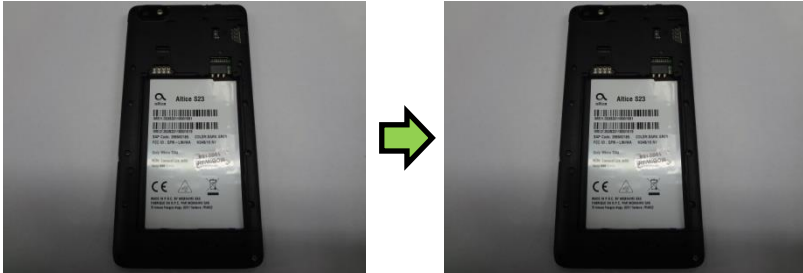
SAP code: ASS lower housing = 286593346,screws = 286453422



Assemble the Lower Housing and fix it with the referenced screws (Qty =17).

3.4 Assemble the battery cover

SAP code: Battery cover= 286562247



Assemble the battery cover carefully .