

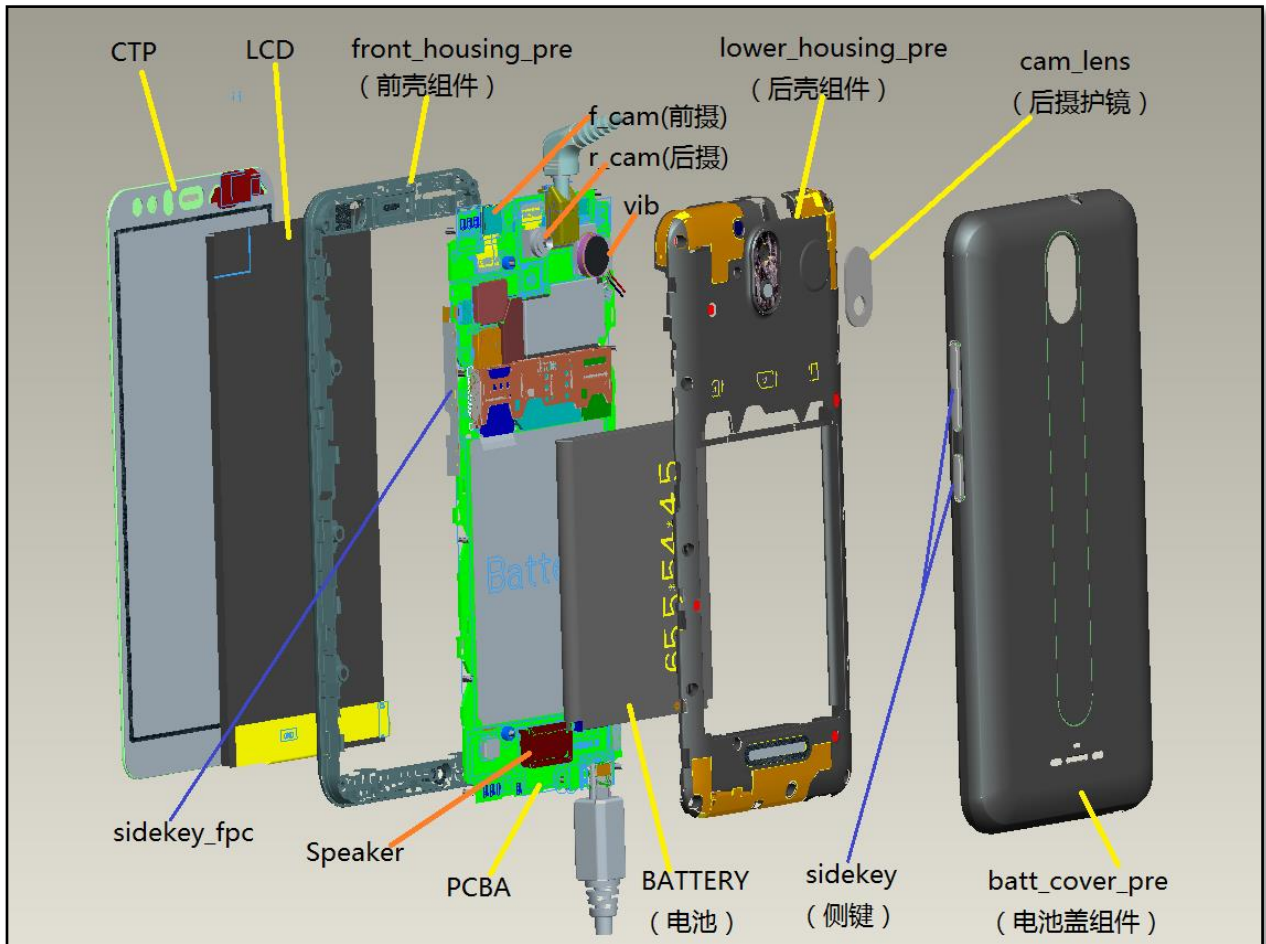
S32 Disassembly and Assembly procedure

SUMMARY

INTRODUCTION	3
1 TOOLING DEFINITION	4
2 DISASSEMBLING PROCEDURE	4
2.1 REMOVE THE BATTERY COVER AND BATTERY	4
2.2 REMOVE THE SCREWS	5
2.3 REMOVE THE LOWER HOUSING ASSEMBLY.....	5
2.4 REMOVE THE BACK CAMERA AND FRONT CAMERA	6
2.5 REMOVE THE PCBA FROM THE UPPER HOUSING.....	6
2.6 REMOVE THE COMPONENTS FROM THE UPPER HOUSING.....	7
2.7 REMOVE THE SPEAKER.....	8
3 ASSEMBLING PROCEDURE	9
3.1 ASSEMBLE THE UPPER HOUSING ASSEMBLY	9
3.2 ASSEMBLE THE LOUD SPEAKER	9
3.3 ASSEMBLE THE COMPONENTS ON THE PCBA	10
3.4 ASSEMBLE THE LOWER HOUSING	11
3.5 ASSEMBLE THE BATTERY COVER	12

Introduction

The purpose of this document is to explain how to disassemble H5024 product. Detailed steps are mentioned with warnings as below.



S32 Disassembly and Assembly procedure

1 Tooling definition

Forceps



Soldering iron



Electric screwdriver



Rigid thin plastic card



2 Disassembling procedure

2.1 Remove the battery cover and battery

SAP code:battery cover = 286502184

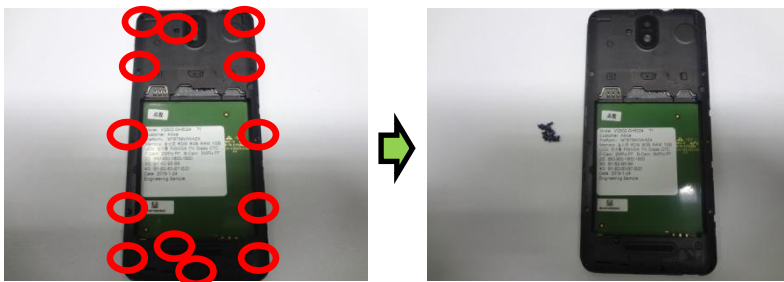
S32 Disassembly and Assembly procedure



Remove the battery cover and battery by opening the special slot.

2.2 Remove the screws

SAP code:screws = 286497440



Remove the screws (qty=13) by using the screwdriver carefully.

2.3 Remove the lower housing assembly

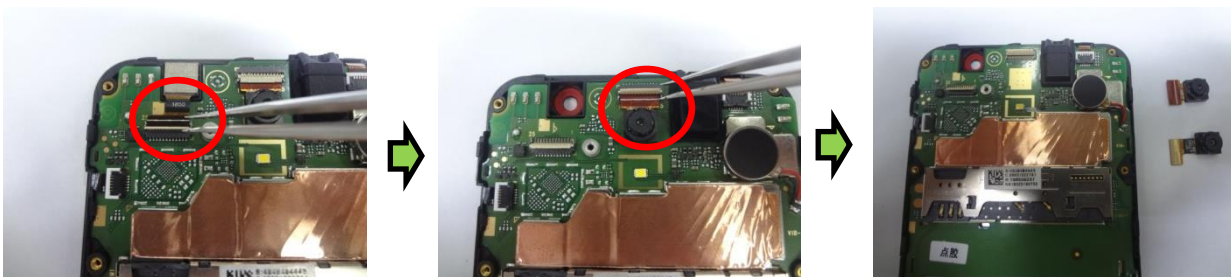
SAP code: ASS lower housing = 286519994



Insert a rigid thin plastic card between the lower and upper housing assembly. Start from the bottom of the product and along the sides to remove the lower housing assembly carefully.

2.4 Remove the back camera and front camera

SAP code: Fro camera = 178139618, Bac camera = 178157004

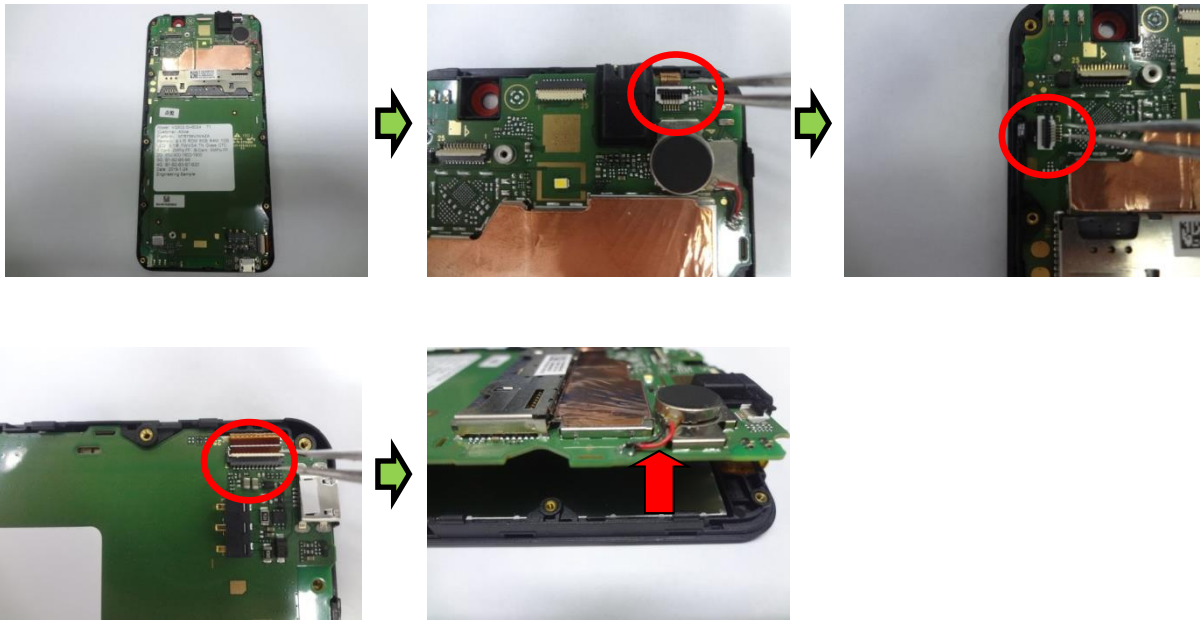


Remove the back camera and front camera by opening the connector.

2.5 Remove the PCBA from the upper housing.

SAP code: REF PCBA = 286516191, Earphone rubber = 286502209, motor = 178137169

S32 Disassembly and Assembly procedure



Open the **LCD FPC** connector and **TP** connector. **FPC SIDEKEY** connector by using the forceps.



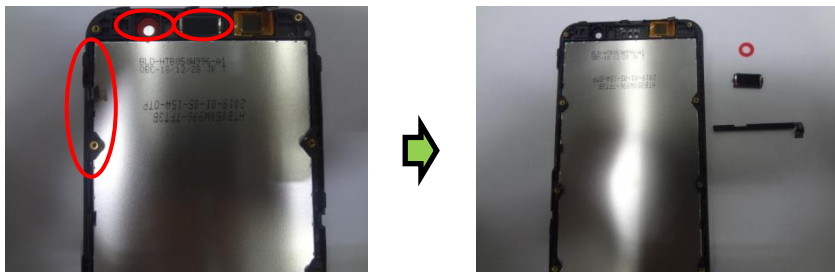
Take down the motor by using the soldering iron, and Earphone rubber.

2.6 Remove the components from the upper housing

SAP code: Ass uppHousing = 286519981, FPC SIDEKEY = 286502100, Receiver = 178116079

S32 Disassembly and Assembly procedure

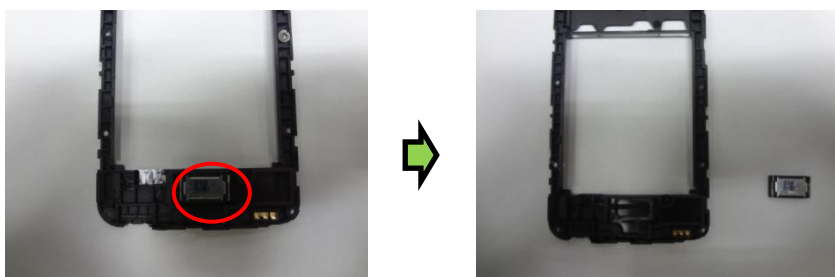
Front camera rubber= 286502197



Remove the FPC SIDEKEY and receiver , Front camera rubber from the upper housing assembly by using the forceps.

2.7 Remove the speaker

SAP code: Speaker = 178156560.



Remove the speaker from the lower housing assembly by using the forceps.

3 Assembling procedure

3.1 Assemble the upper housing assembly

SAP code: Ass uppHousing = 286519981, FPC SIDEKEY = 286502100, Receiver = 178116079

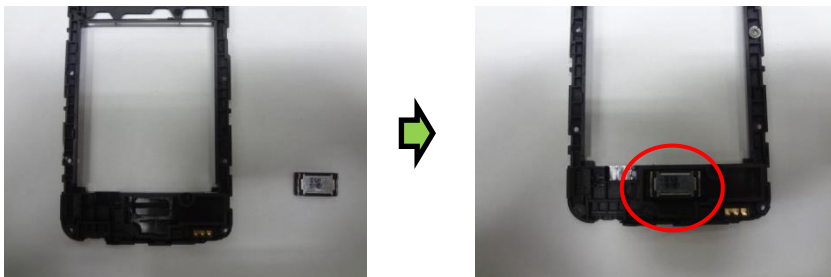
Front camera rubber= 286502197



Use the forceps to put the receiver, FPC SIDEKEY, Front camera rubber in the special slot of the upper housing assembly.

3.2 Assemble the Loud speaker

SAP code: Speaker = 178156560,



Inset speaker into the dedicated location of the Lower Housing assembly.

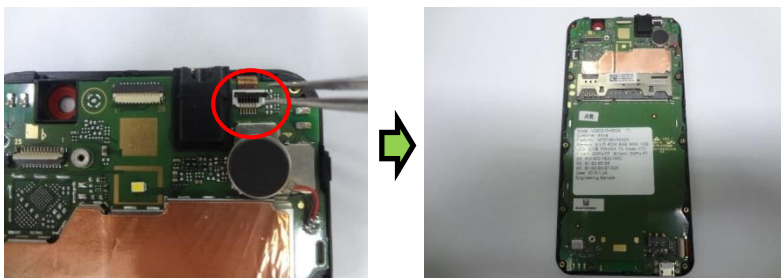
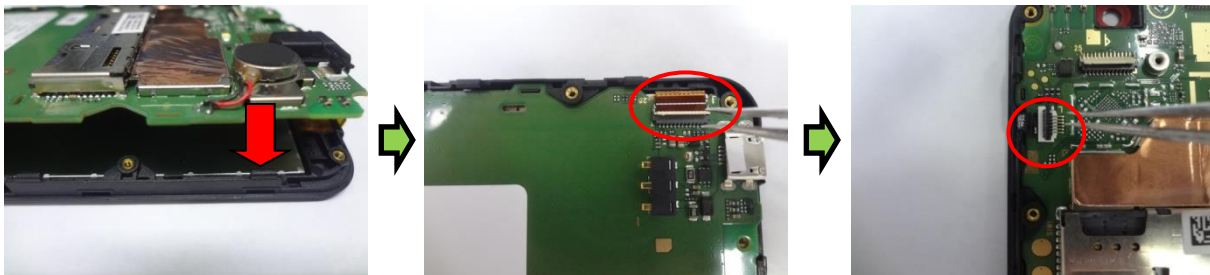
3.3 Assemble the components on the PCBA

SAP code: REF PCBA = 286516191, Earphone rubber = 286502209, motor = 178137169

Fro camera = 178139618, Bac camera = 178157004

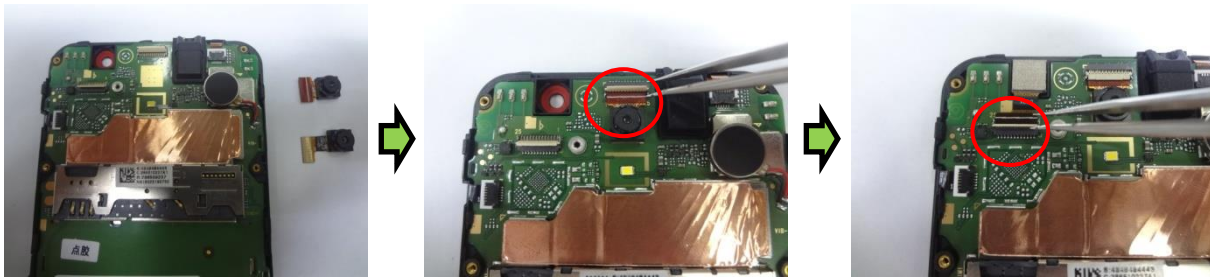


Assemble motors by using soldering iron and Earphone rubber.



Use forceps and insert the LCD FPC. SIDEKEY FPC. TP FPC into the dedicated connector on the PCBA.

S32 Disassembly and Assembly procedure



Assemble front camera and rear camera.

3.4 Assemble the lower housing

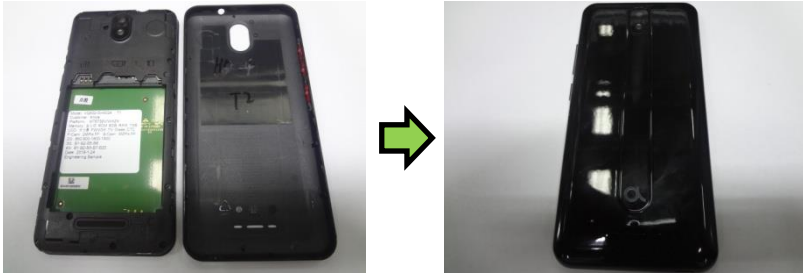
SAP code: ASS lower housing = 286519994, screws = 286497440



Assemble the Lower Housing and fix it with the referenced screws (Qty =13).

3.5 Assemble the battery cover

SAP code: Battery cover= 286502184



Assemble the battery cover carefully .