

# **S33 Disassembly and Assembly procedure**

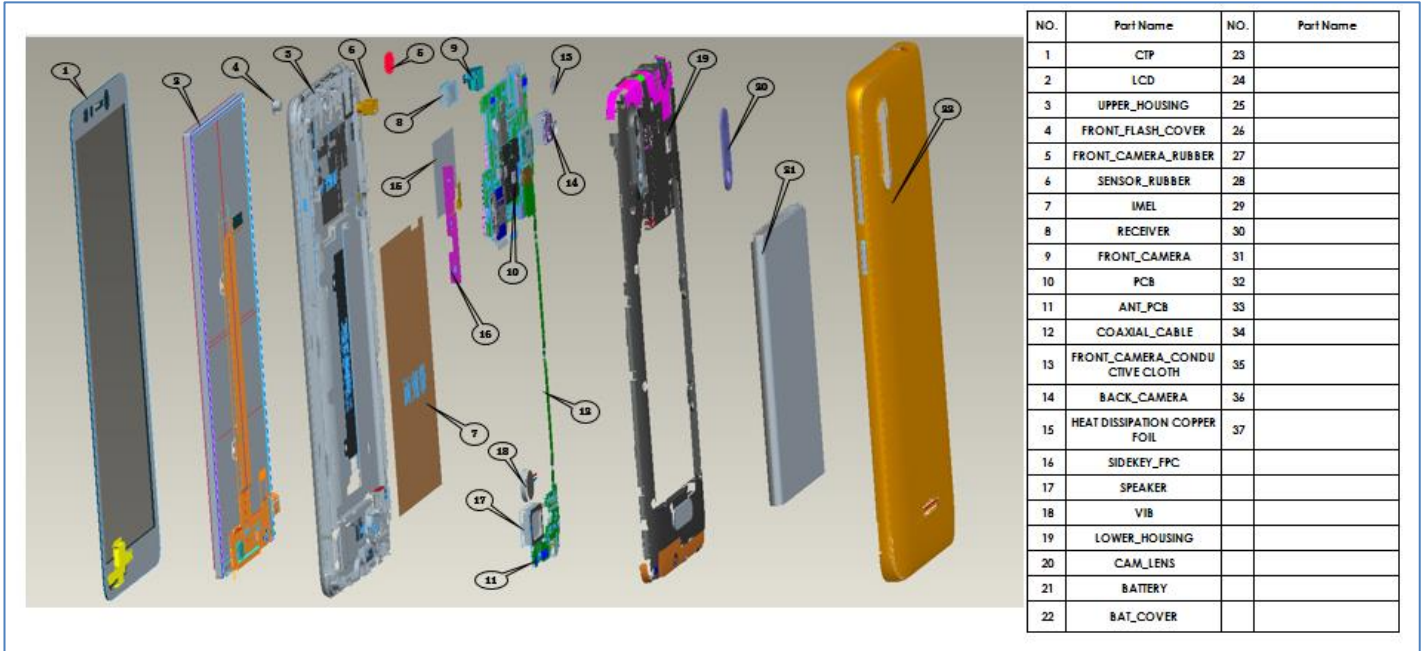


# SUMMARY

<b>INTRODUCTION</b> .....	<b>3</b>
<b>1 TOOLING DEFINITION</b> .....	<b>4</b>
<b>2 DISASSEMBLING PROCEDURE</b> .....	<b>6</b>
2.1 REMOVE THE BATTERY COVER .....	6
2.2 REMOVE THE SCREWS .....	6
2.3 REMOVE THE LOWER HOUSING ASSEMBLY.....	7
2.4 REMOVE THE REF SUB .....	7
2.5 REMOVE THE PCBA .....	8
2.6 RELEASE THE UPPER HOUSING .....	9
<b>3 ASSEMBLING PROCEDURE</b> .....	<b>10</b>
3.1 ASSEMBLE THE UPPER HOUSING.....	10
3.2 ASSEMBLE THE PCBA .....	10
3.3 ASSEMBLE THE REF SUB.....	12
3.4 ASSEMBLE THE LOWER HOUSING .....	12
3.5 ASSEMBLE THE BATTERY COVER .....	13

## Introduction

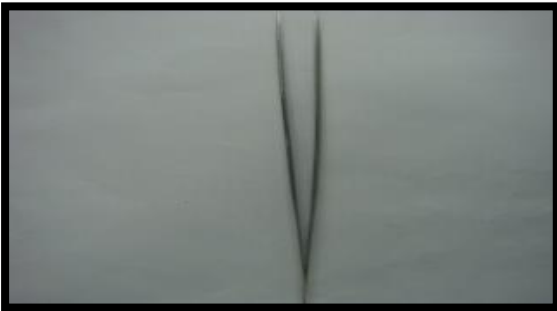
The purpose of this document is to explain how to disassemble H5713 product. Detailed steps are mentioned with warnings as below.



### S33 Disassembly and Assembly procedure

## 1 Tooling definition

**Forceps**



**Soldering iron**



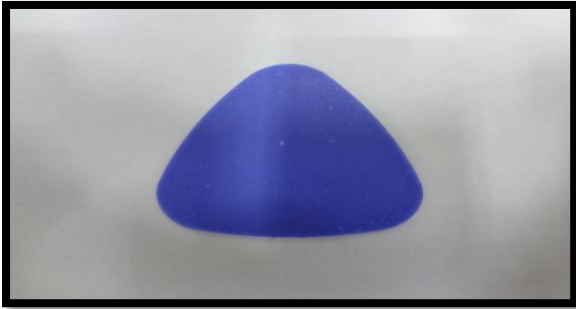
**Electric Phillips  
screwdriver 1.5mm**



**Electric Phillips screwdriver  
0.8mm**



**The blade**



**Heat gun**



---

**S33 Disassembly and Assembly procedure**

*This document is confidential. It cannot be reproduced or communicated without written authorization.*

## 2 Disassembling procedure

### 2.1 Remove the battery cover

SAP code:

batt-cover = 286586114

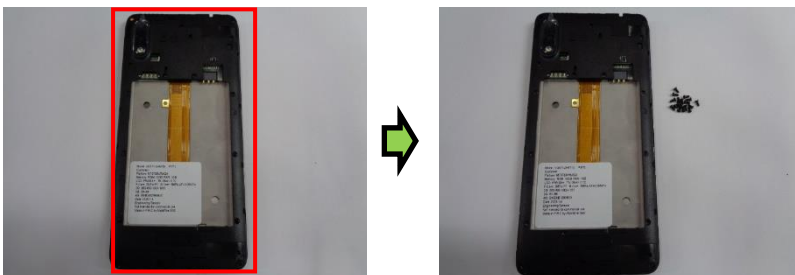


Remove the battery cover and battery by opening the special slot.

### 2.2 Remove the screws

SAP code:

SAP code:screws = 286152690



Remove the screws (qty=17) by using the screwdriver carefully.

### 2.3 Remove the lower housing assembly

SAP code: lower housing = 286583598



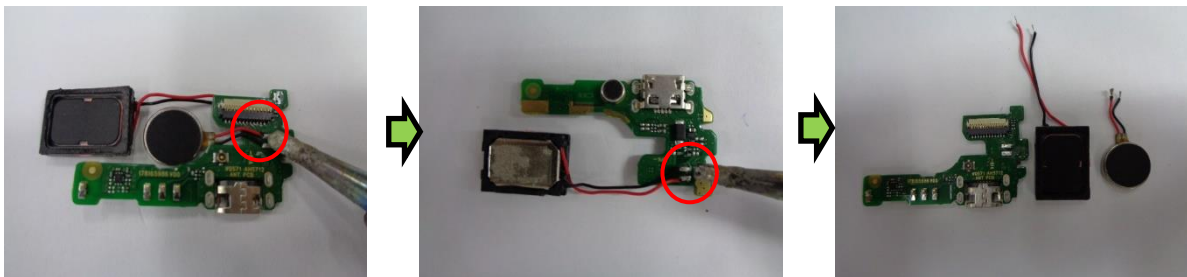
Insert a rigid thin plastic card between the lower and upper housing assembly. Start from the bottom of the product and along the sides to remove the lower housing assembly

### 2.4 Remove the REF SUB

SAP code: REF SUB: 286583514 Motor: 178137169 Speaker: 178123339



Use the forceps to open the FPC connection and RF Cable connection and remove the Ass ANT PCB from the upper housing assembly.



Remove the motor and speaker from the REF SUB.

## 2.5 Remove the PCBA

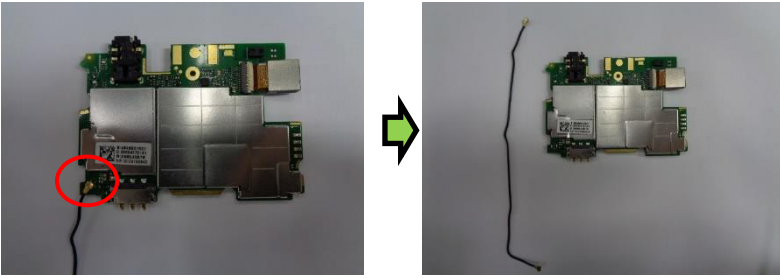
SAP code:

REF PCBA= 286583506 RF Cable= 178165460 Front camera = 178169869 Back camera = 178171877

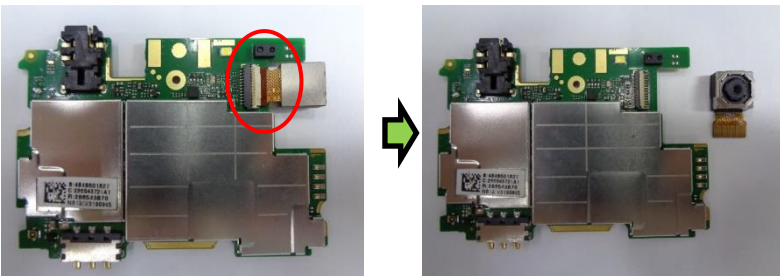


Use the forceps to open the **LCD FPC connection** and **Front camera connection** and remove the PCBA from the upper housing.





Remove the RF Cable from the PCBA.



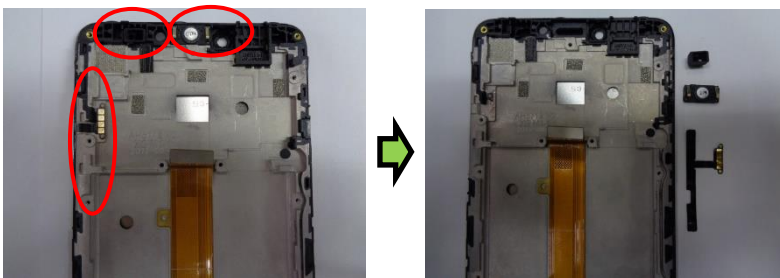
Remove the Back camera from the PCBA.

## 2.6 Release the upper housing

SAP code:

Receiver= 178108027 FPC sidekey = 286538225 sensor rubber = 286523802

ASS Upper housing= 286591467



Remove the Receiver, FPC sidekey and sensor rubber from the upper housing.

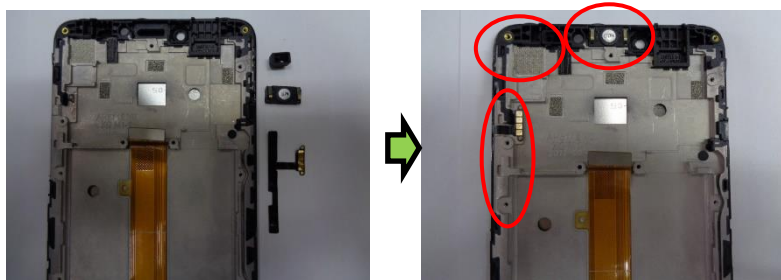
### 3 Assembling procedure

#### 3.1 Assemble the upper housing

SAP code:

Receiver= 178108027 FPC sidekey = 286538225 sensor rubber = 286523802

ASS Upper housing= 286591467

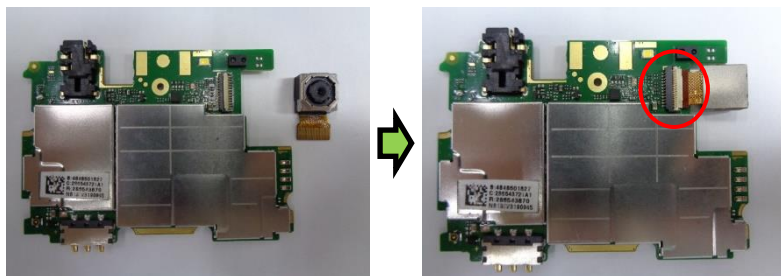


Assemble the Receiver, FPC sidekey and sensor rubber in the upper housing.

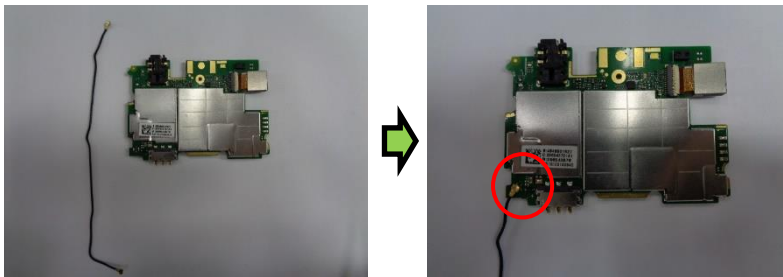
#### 3.2 Assemble the PCBA

SAP code:

REF PCBA= 286583506 RF Cable= 178165460 Front camera = 178169869 Back camera = 178171877



Assemble the back camera by using the forceps and keep carefully.



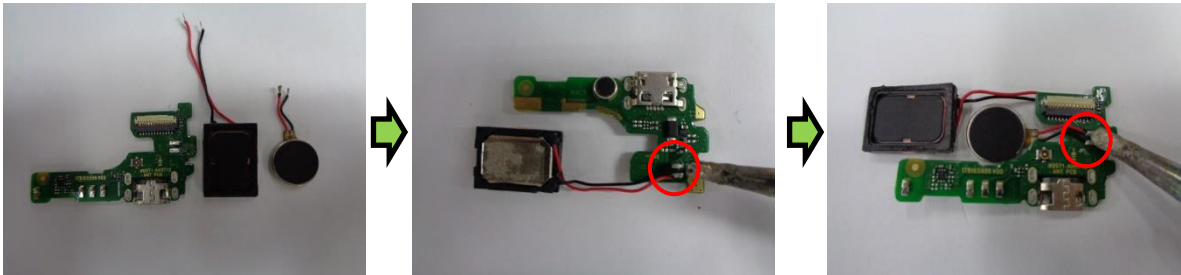
Assemble the RF Cable by using the forceps and keep carefully.



Assemble the PCBA by using the forceps and install the LCD FPC connection and Front camera connection.

### 3.3 Assemble the REF SUB

SAP code: REF SUB: 286583514 Motor: 178137169 Speaker: 178123339



Assemble the motor and speaker by using the iron.



Assemble the REF SUB by using the forceps and install the FPC connection and RF Cable connection.

### 3.4 Assemble the lower housing

SAP code: ASS lower housing = 286591467 screws = 286152690



Assemble the Lower Housing and fix it with the referenced screws (Qty =17).

### 3.5 Assemble the battery cover

SAP code: Battery cover= 286586114



Assemble the battery cover carefully .