

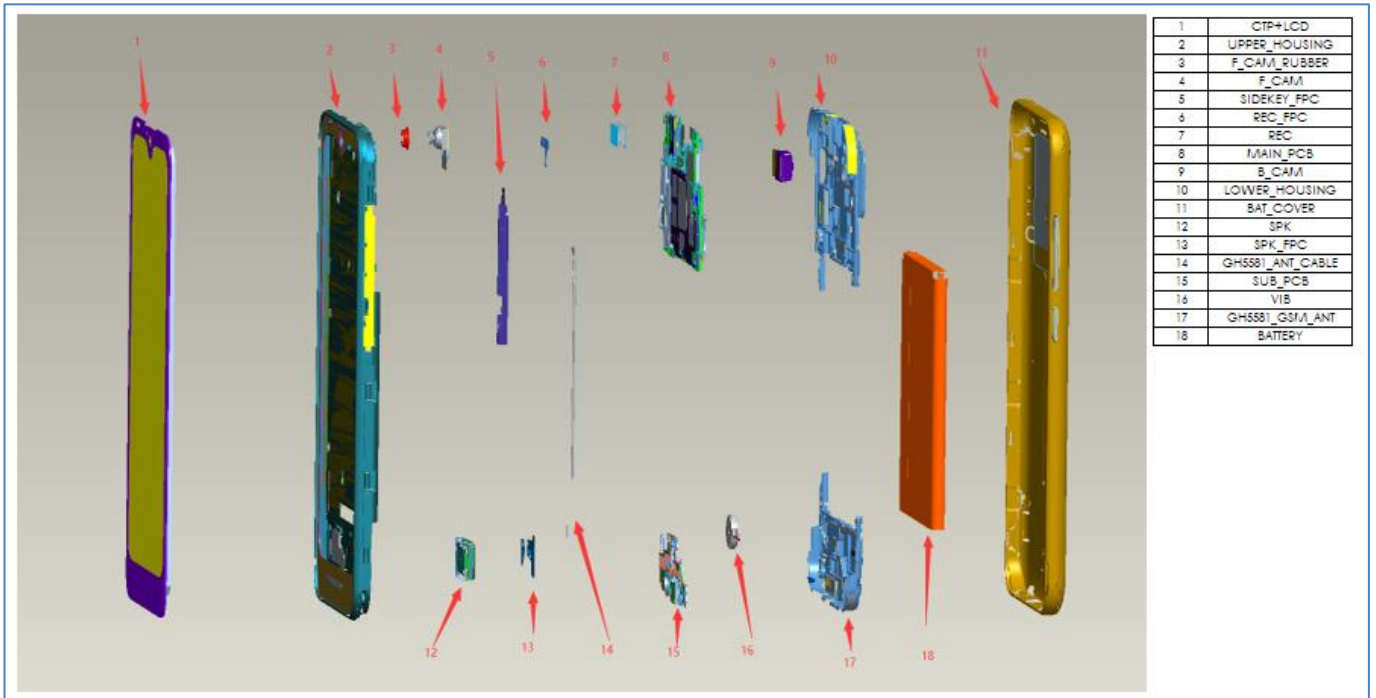
# **S34 Disassembly and Assembly procedure**

## SUMMARY

<b>INTRODUCTION</b> .....	<b>3</b>
<b>1 TOOLING DEFINITION</b> .....	<b>4</b>
<b>2 DISASSEMBLING PROCEDURE</b> .....	<b>6</b>
2.1 REMOVE THE BATTERY COVER .....	6
2.2 REMOVE THE SCREWS .....	6
2.3 REMOVE THE LOWER HOUSING ASSEMBLY.....	7
2.4 REMOVE THE REF SUB .....	8
2.5 REMOVE THE PCBA .....	8
2.6 RELEASE THE UPPER HOUSING .....	9
2.7 RELEASE THE LOWER HOUSING .....	10
<b>3 ASSEMBLING PROCEDURE</b> .....	<b>11</b>
3.1 ASSEMBLE THE LOWER HOUSING .....	11
3.2 ASSEMBLE THE UPPER HOUSING.....	12
3.3 ASSEMBLE THE PCBA .....	12
3.4 ASSEMBLE THE REF SUB.....	13
3.5 ASSEMBLE THE LOWER HOUSING .....	14
3.6 ASSEMBLE THE BATTERY COVER .....	14

## Introduction

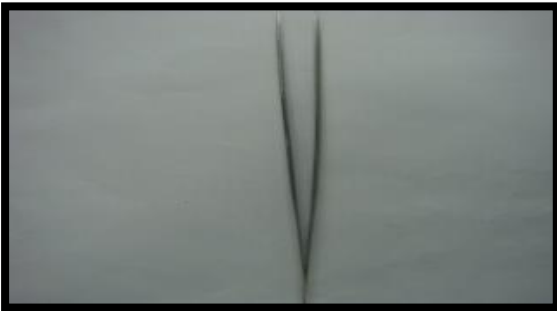
The purpose of this document is to explain how to disassemble H5581 product. Detailed steps are mentioned with warnings as below.



### **S34 Disassembly and Assembly procedure**

## 1 Tooling definition

**Forceps**



**Soldering iron**



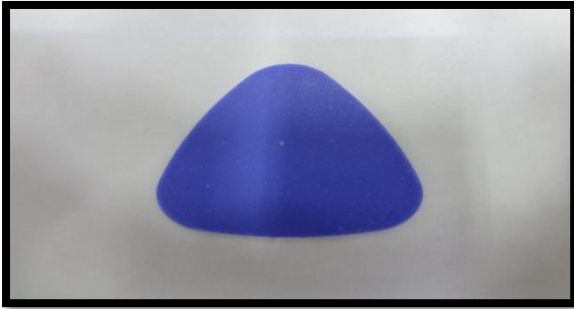
**Electric Phillips  
screwdriver 1.5mm**



**Electric Phillips screwdriver  
0.8mm**



**The blade**



**Heat gun**



**S34 Disassembly and Assembly procedure**

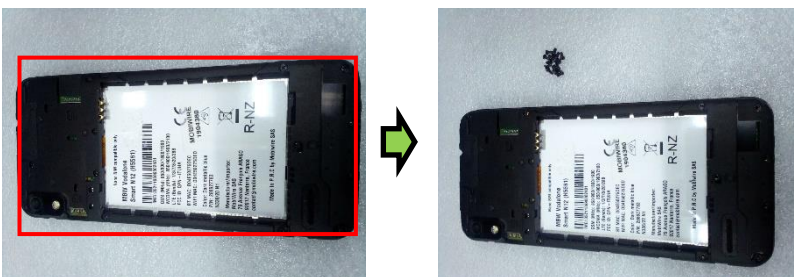
## 2 Disassembling procedure

### 2.1 Remove the battery cover



Remove the battery cover by opening the special slot.

### 2.2 Remove the screws



Remove the screws (qty=15) by using the screwdriver carefully.

### 2.3 Remove the lower housing assembly



Insert a rigid thing plastic card between the lowerA and upper housing assembly. Start from the bottom of the product, then continue on the sides and remove carefully the lowerA housing assembly.



Insert a rigid thing plastic card between the lowerB and upper housing assembly. Start from the bottom of the product, then continue on the sides and remove carefully the lowerB housing assembly.



## 2.4 Remove the REF SUB



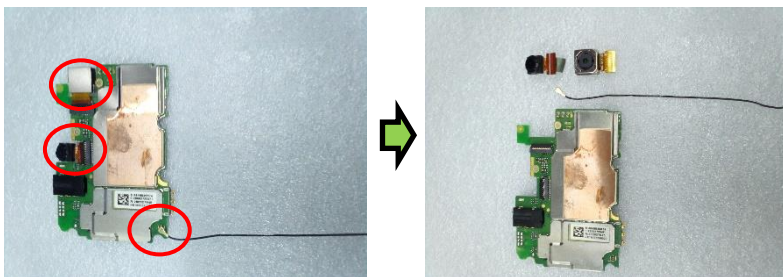
Use the forceps and soldering iron to open the SUB FPC connection and motor connection and remove the SUB PCB from the upper housing assembly.

## 2.5 Remove the PCBA



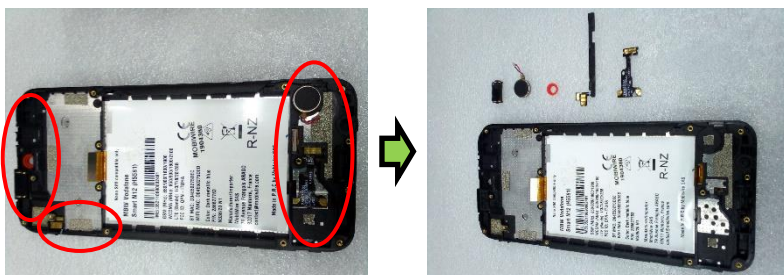
Use the forceps to open the **LCD FPC connection** and remove the PCBA from the upper housing.





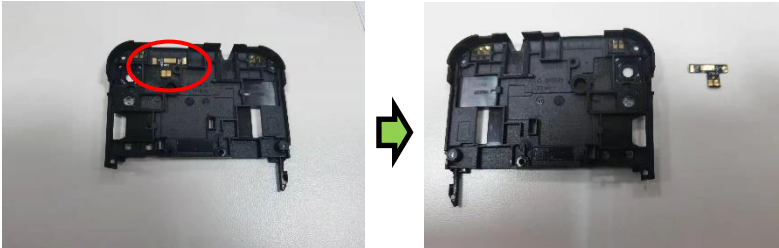
Remove the Back camera and Front camera.RF Cable from the PCBA.

## 2.6 Release the upper housing

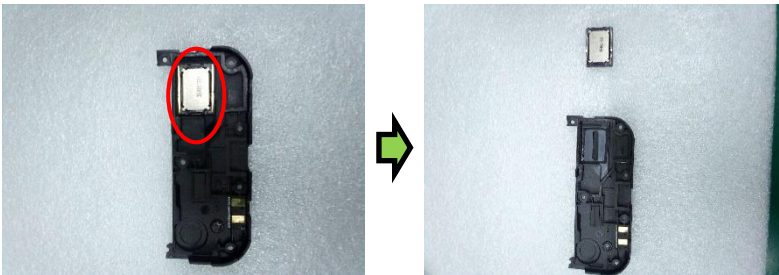


Remove the Receiver. FPC sidekey and Sensor rubber.Spk fpc.Motor from the upper housing.

## 2.7 Release the lower housing



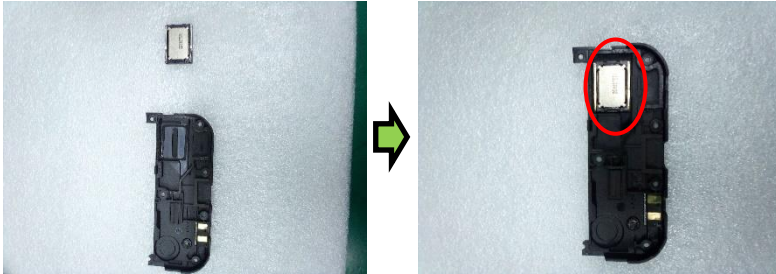
Remove the FPC REC from the lowerA housing.



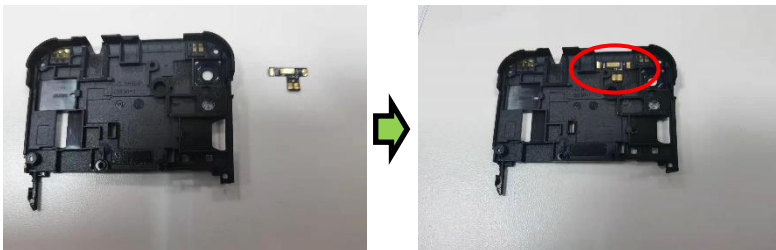
Remove the Speaker from the lowerB housing.

### 3 Assembling procedure

#### 3.1 Assemble the lower housing

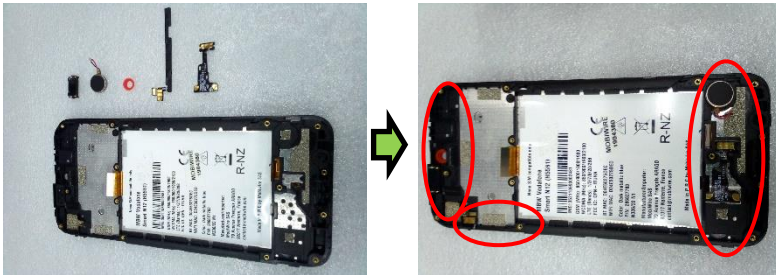


Assemble the Speaker in the lowerB housing.



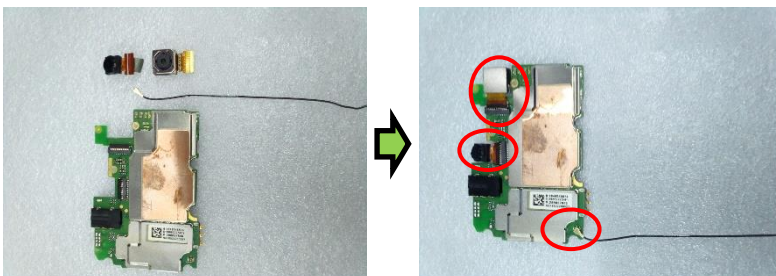
Assemble the Spk fpc in the lowerA housing.

### 3.2 Assemble the upper housing



Assemble the Receiver. FPC sidekey and Sensor rubber. Spk fpc. Motor in the upper housing.

### 3.3 Assemble the PCBA



Assemble the Back camera and Front camera. RF Cable by using the forceps and keep carefully.



Assemble the PCBA by using the forceps and install the LCD FPC connection.

### 3.4 Assemble the REF SUB



Assemble the REF SUB by using the forceps and install the FPC connection and RF Cable connection.



### 3.5 Assemble the lower housing



Assemble the Lower HousingA & Lower HousingB and fix it with the referenced screws (Qty =15).

### 3.6 Assemble the battery cover



Assemble the battery cover carefully .