

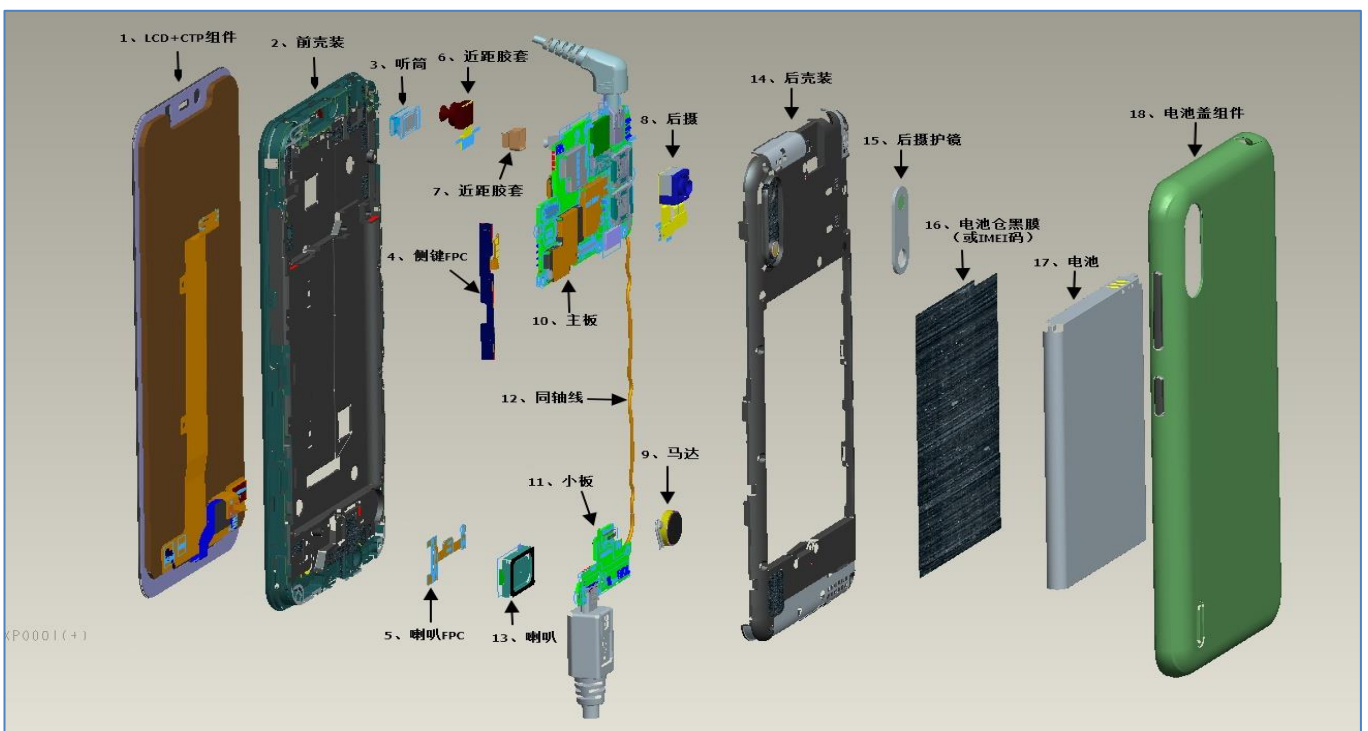
S42 Disassembly and Assembly procedure

SUMMARY

INTRODUCTION	3
1 TOOLING DEFINITION	4
2 DISASSEMBLING PROCEDURE	6
2.1 REMOVE THE BATTERY COVER	6
2.2 REMOVE THE SCREWS	6
2.3 REMOVE THE LOWER HOUSING ASSEMBLY.....	7
2.4 REMOVE THE REF SUB	7
2.5 REMOVE THE PCBA	8
2.6 RELEASE THE UPPER HOUSING	9
2.7 REMOVE THE SPEAKER	10
3 ASSEMBLING PROCEDURE	11
3.1 ASSEMBLE THE SPEAKER.....	11
3.2 ASSEMBLE THE UPPER HOUSING.....	11
3.3 ASSEMBLE THE PCBA	12
3.4 ASSEMBLE THE REF SUB.....	14
3.5 ASSEMBLE THE LOWER HOUSING	14
3.6 ASSEMBLE THE BATTERY COVER	15

Introduction

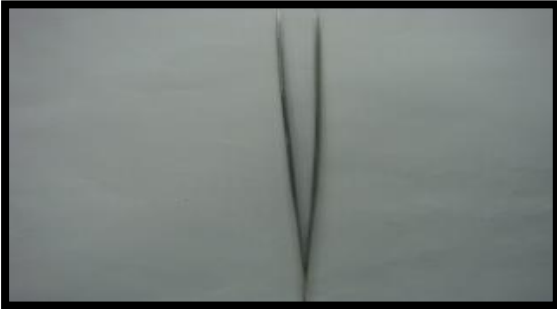
The purpose of this document is to explain how to disassemble H5552 product. Detailed steps are mentioned with warnings as below.



S42 Disassembly and Assembly procedure

1 Tooling definition

Forceps



Soldering iron



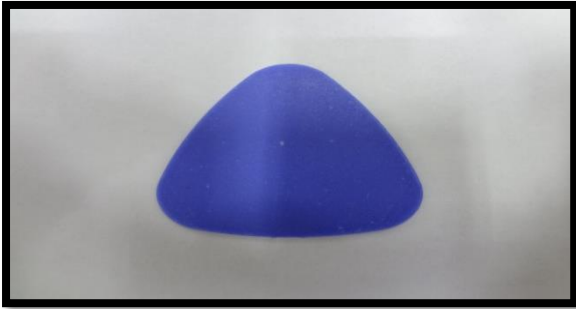
**Electric Phillips
screwdriver 1.5mm**



**Electric Phillips screwdriver
0.8mm**



The blade



Heat gun



S42 Disassembly and Assembly procedure

This document is confidential. It cannot be reproduced or communicated without written authorization.

2 Disassembling procedure

2.1 Remove the battery cover

SAP code:

batt-cover =286516901

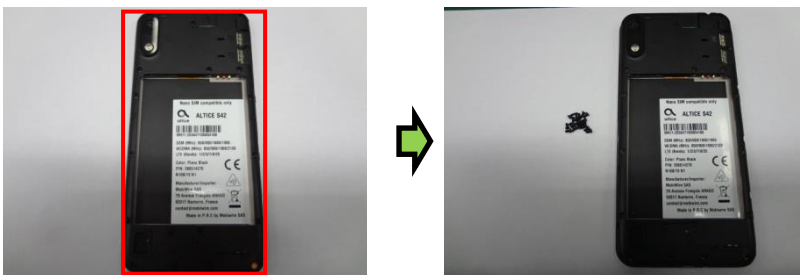


Remove the battery cover and battery by opening the special slot.

2.2 Remove the screws

SAP code:

SAP code:screws = 286497440



Remove the screws (qty=19) by using the screwdriver carefully.

S42 Disassembly and Assembly procedure

2.3 Remove the lower housing assembly

SAP code: ASS lower housing = 286529924



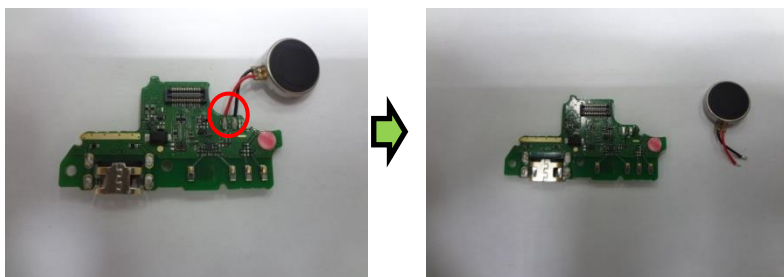
Insert a rigid thin plastic card between the lower and upper housing assembly. Start from the bottom of the product and along the sides to remove the lower housing assembly

2.4 Remove the REF SUB

SAP code: REF SUB: 286516729 Motor: 178137169



Use the forceps to open the FPC connection and RF Cable connection and remove the Ass ANT PCB from the upper housing assembly.



Remove the motor from the REF SUB.

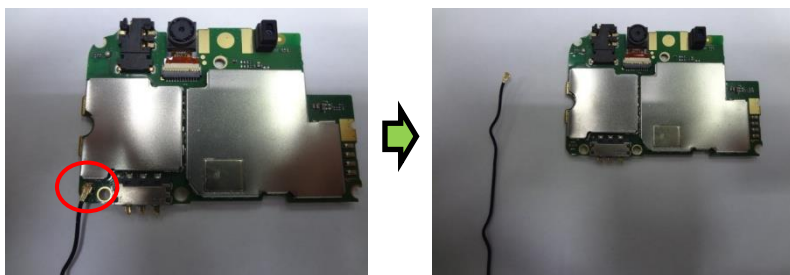
2.5 Remove the PCBA

SAP code:

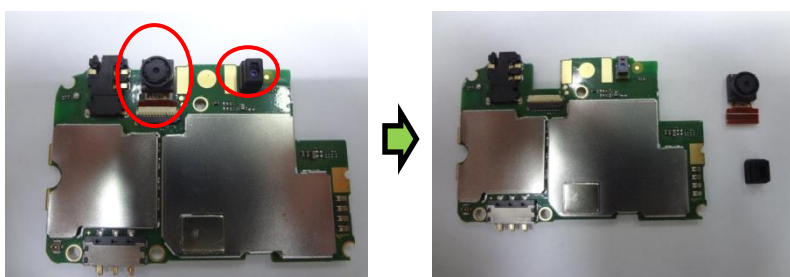
REF PCBA= 286514027 RF Cable= 178162261 stk rubber = 286516740 Front camera = 178141717



Use the forceps to open the LCD FPC connection and Bac_cam connection and remove the PCBA from the upper housing.



Remove the RF Cable from the PCBA.



Remove the Fro_cam and stk rubber from the PCBA.

2.6 Release the upper housing

SAP code:

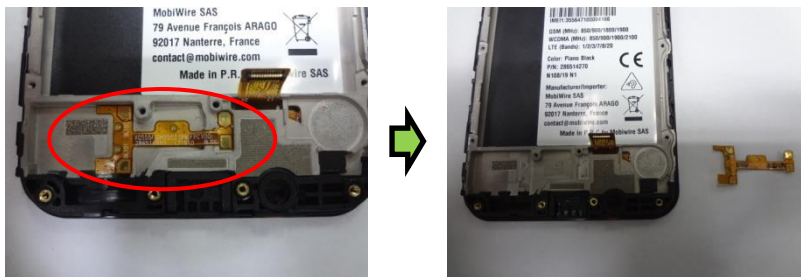
Back camera = 178141720 Receiver= 178116079 FPC sidekey = 286515909 FPC SPK = 286516310

ASS Upper housing= 286529916



Remove the Back camera and Receiver. FPC sidekey from the upper housing.

S42 Disassembly and Assembly procedure



Remove the FPC SPK from the upper housing.

2.7 Remove the Speaker

SAP code:

Speaker = 178104248



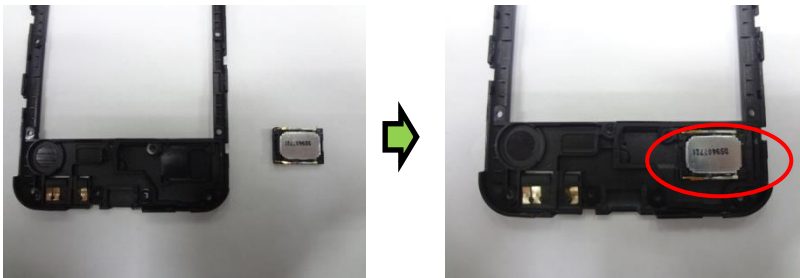
Remove the speaker from the lower housing assembly by using the forceps.

3 Assembling procedure

3.1 Assemble the Speaker

SAP code:

Speaker = 178104248



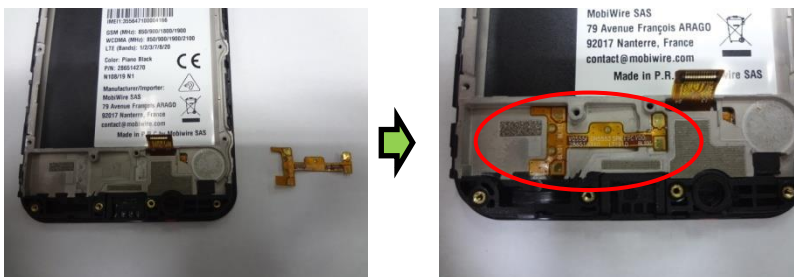
Inset speaker into the dedicated location of the Lower Housing assembly.

3.2 Assemble the upper housing

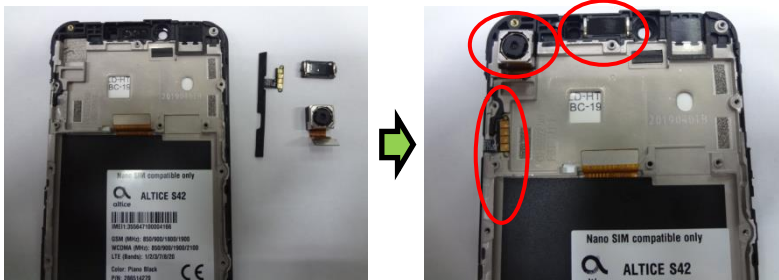
SAP code:

Back camera = 178141720 Receiver= 178116079 FPC sidekey = 286515909 FPC SPK = 286516310

ASS Upper housing= 286529916



Assemble the FPC spk in the upper housing.

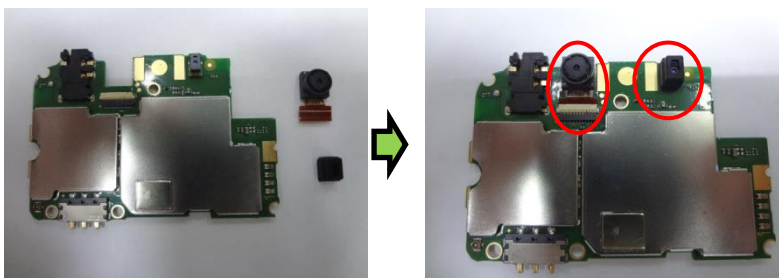


Assemble the Back camera and Receiver. FPC sidekey in the upper housing.

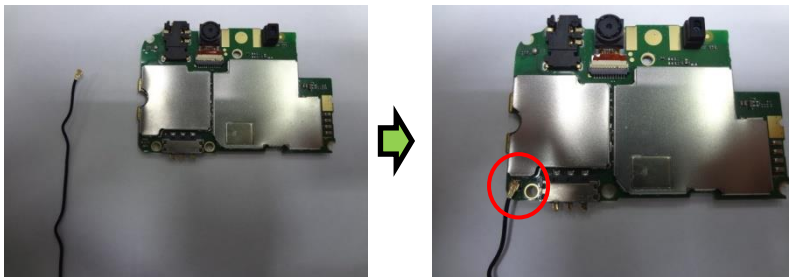
3.3 Assemble the PCBA

SAP code:

REF PCBA= 286514027 RF Cable= 178162261 stk rubber = 286516740 Front camera = 178141717



Assemble the front camera and stk rubber by using the forceps and keep carefully.



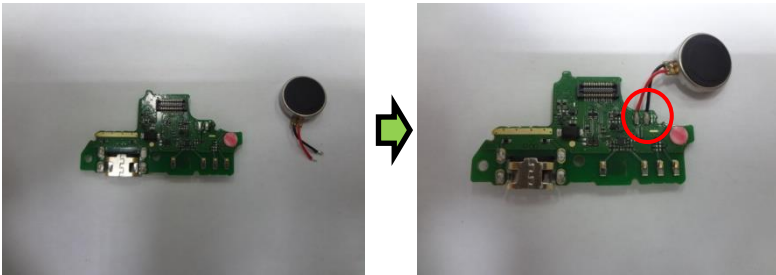
Assemble the RF Cable by using the forceps and keep carefully.



Assemble the PCBA by using the forceps and install the LCD FPC connection and Back camera connection.

3.4 Assemble the REF SUB

SAP code: REF SUB: 286516729 Motor: 178137169



Assemble the motor by using the iron.



Assemble the REF SUB by using the forceps and install the FPC connection and RF Cable connection.

3.5 Assemble the lower housing

SAP code: ASS lower housing = 286529924 screws = 286497440



Assemble the Lower Housing and fix it with the referenced screws (Qty =19).

S42 Disassembly and Assembly procedure

3.6 Assemble the battery cover

SAP code: Battery cover= 286516901



Assemble the battery cover carefully .